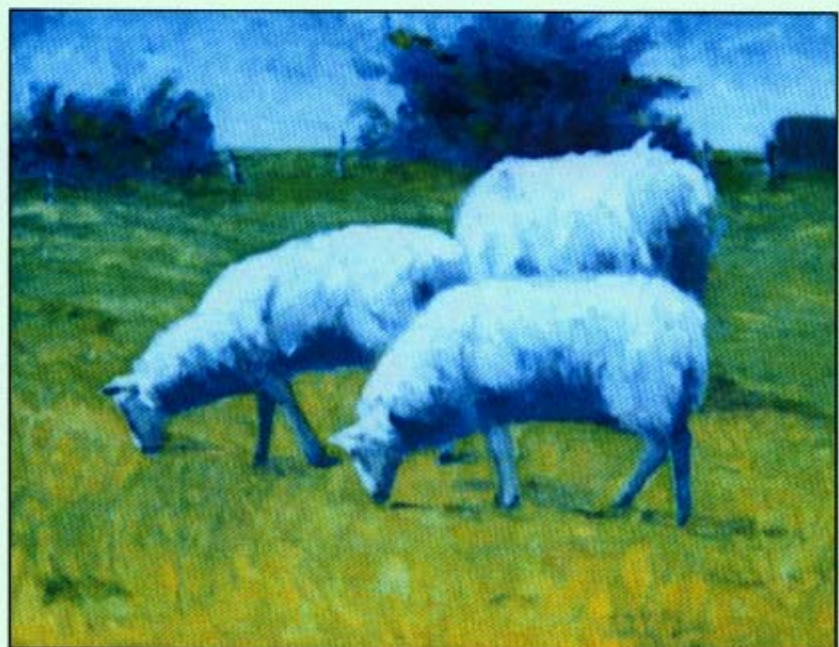


JANE DUDLEY BREMER



Gracie



Sheep in the Meadow



SALEMTOWNE

1000 Salem Towne Drive
Winston-Salem, North Carolina 27106

AUTUMN ART EXHIBIT

Wednesday, September 19th

Paintings by
Jane Dudley Bremer

Photographs by
Jeannine M. Smith

Reception 1:00 to 2:00 P.M.

Smith Art Gallery
Ground Level • Bahnson Hall
1000 Salem Towne Drive

Jane is a member of Associated Artists and has taken many classes in pastel, watercolor and oil painting. She is looking forward to her first Art Exhibit at Salem Towne.

Jeannine will bring some of her recent photographs for the Autumn Art show, which will continue until November 12.

Salem Towne, a nationally accredited continuing care retirement community, affiliated with the Moravian Church, is located at 1000 Salem Towne Drive in Winston-Salem, North Carolina.

From I-40, exit at 52 North and continue to University Parkway South (Exit #115-B). Continue on University Parkway South for approximately two miles, turn right on Bethabara Park Boulevard.

For additional information call: (336) 767-8130.